

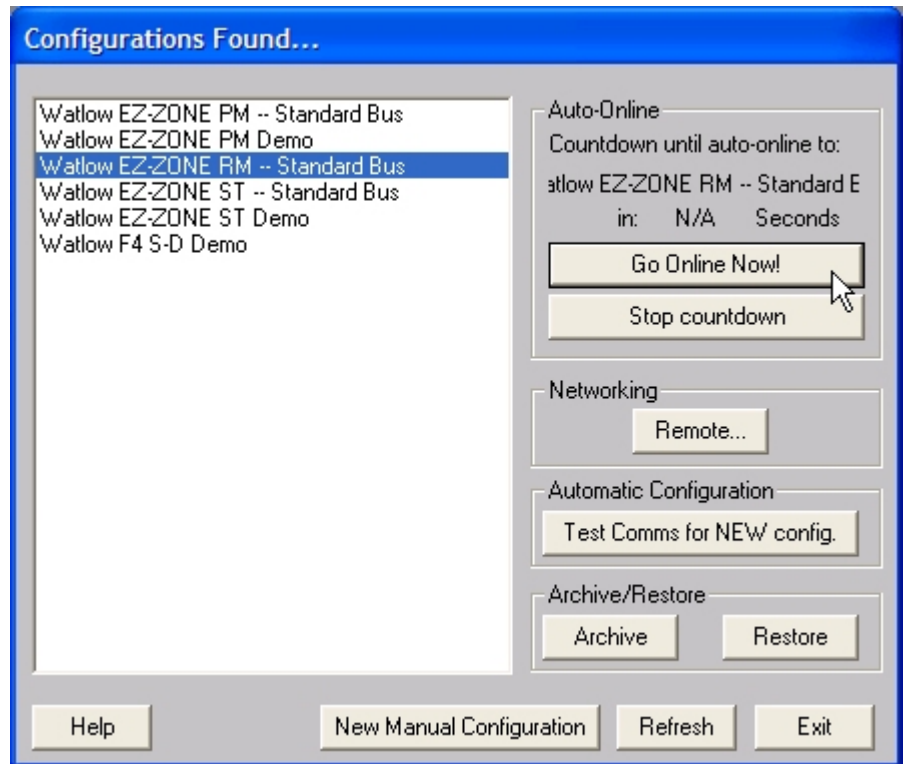


Add an Auxiliary Input for an EZ-ZONE® RM Controller in SpecView

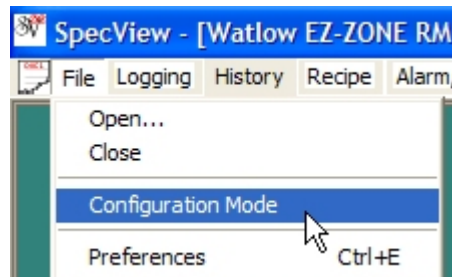
The following procedure guides you through manually adding an Auxiliary Input to an existing SpecView configuration that communicates with one or more EZ-ZONE® RM Controllers.

To add one or more Auxiliary Input instruments to a configuration:

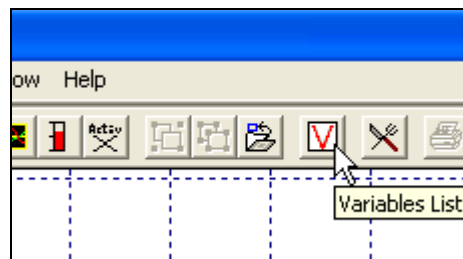
- 1) Launch SpecView.
- 2) Click through any informational dialogs until you get to the **Configurations Found** dialog.
- 3) In the list select the configuration you want to modify.
- 4) Click **Go Online Now!**



- 5) From the **File** menu choose **Configuration Mode**.

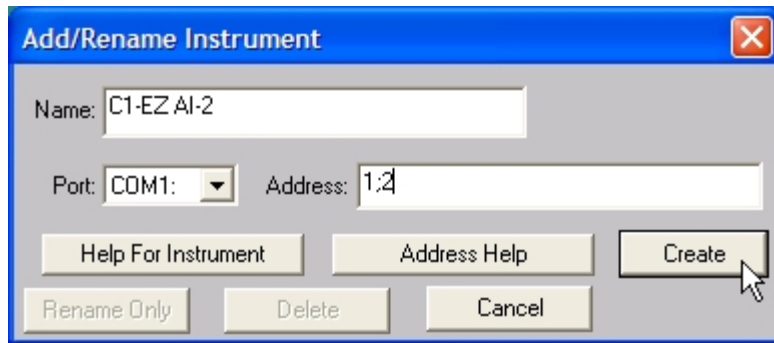
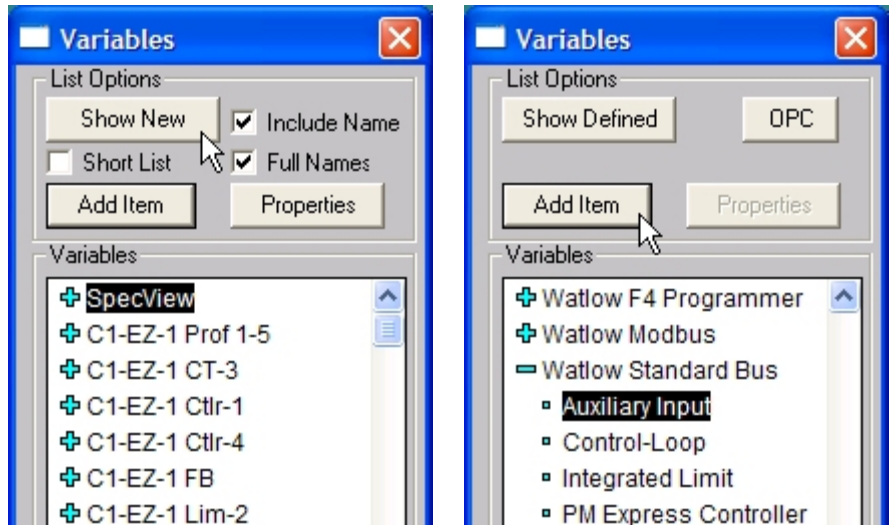


- 6) Click the **Variables** button.



Add an Auxiliary Input for an EZ-ZONE[®] RM Controller in SpecView

- 7) Click **Show New**.
- 8) In the **Variables** list click the **+** button next to **Watlow Standard Bus**.
- 9) Select **Auxiliary Input**.
- 10) Click **Add Item**.
- 11) In the **Add/Rename Instrument** dialog type a **Name** for the instrument.
- 12) Select the **Port**.
- 13) Enter the **Address**.
See the explanation at the right.



EZ-ZONE[®] RM Auxiliary Input Instrument Addresses

The address entered into SpecView for an Auxiliary Input instrument consists of:

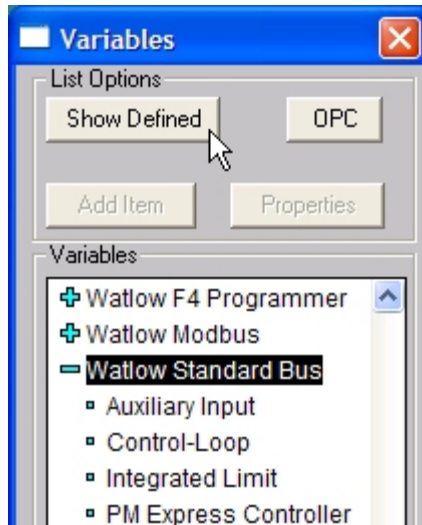
- The Zone number or Standard Bus address (1 to 9, A, B, C, D, E, F, or H) replaces “z” in the Address shown in the table below.
- A semicolon delimiter
- The offset or instance number (2, 3 or 4) depending on the controller’s part number

For part numbers matching...	Add... Instrument Name (Description)	Address
RMCxx(R or P)xxxxxxxx	Auxiliary Input (set up and monitor analog input 2)	z;2
RMCxxx(R or P)xxxxxx	Auxiliary Input (set up and monitor analog input 3)	z;3
RMCxxxxx(R or P)xxxxx	Auxiliary Input (set up and monitor analog input 4)	z;4

- 14) Click **Create**.

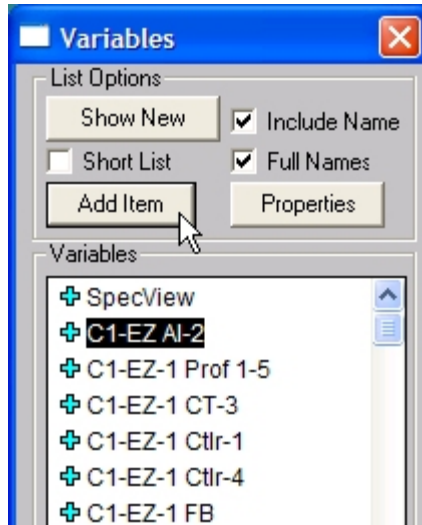
Add an Auxiliary Input for an EZ-ZONE[®] RM Controller in SpecView

15) Click **Show Defined**.



16) To add instrument views to a Graphical Display Window (GDW), for each:

- If the GDW is not already open, open it.
- In the **Variables** list select the instrument.
- Click **Add Item**.



17) To save the GDW:

- From the **File** menu, choose **Save As**.
- Enter a **File name** for the GDW.
- Click **Save**.



18) Repeat from step 7 for each auxiliary input instrument to be added.